

# The Crystal Connection



WINTER 2023



CITY of CRYSTAL



## City's Biennial Budget Community News and Events

Turn Over for Recreation Brochure

PRSR STD  
US POSTAGE PAID  
PERMIT 30308  
TWIN CITIES MN

City of Crystal  
4141 Douglas Dr. N.  
Crystal, MN 55422

## CITY CONTACTS

### CRYSTAL CITY HALL

4141 Douglas Dr. N.  
Crystal, MN 55422  
[crystalmn.gov](http://crystalmn.gov)



**Hours:** Monday - Friday, 8 a.m. – 4:30 p.m.

Closed: Veterans Day Nov. 10; Thanksgiving Nov. 23 and 24;  
Christmas Day Dec. 25; New Years Day Jan. 1;  
MLK Jr. Day Jan. 15; and Presidents Day Feb. 19.

Main Switchboard .....	763-531-1000
Animal Control .....	763-531-5161
Assessing .....	763-531-1000
Code Enforcement .....	763-531-1144
Communications .....	763-531-1136
Community Center/Recreation .....	763-531-0052
Crime Tip Hotline .....	763-531-1020
Elections/Voting .....	763-531-1145
Engineering .....	763-531-1161
Fire: West Metro Fire-Rescue District .....	763-230-7000
Hennepin Recycling Group .....	763-493-8006
Parks .....	763-531-1158
Police Records .....	763-531-1014
Police/Fire Emergencies .....	911
Rental Properties .....	763-531-1143
Streets .....	763-531-1164
Utilities .....	763-531-1166
Utility Billing .....	763-531-1120
Zoning .....	763-531-1142

Deaf and hard-of-hearing callers can contact the  
MN Relay Service at 711 or 1-800-627-3529 V/TTY

## CITY COUNCIL



**Mayor Jim Adams**  
612-805-5101 (Call or Text)  
[jim.adams@crystalmn.gov](mailto:jim.adams@crystalmn.gov)



**Taji Onesirosan (Section 1)**  
651-434-0469  
[taji.onesirosan@crystalmn.gov](mailto:taji.onesirosan@crystalmn.gov)



**Forest Eidbo (Section 2)**  
763-290-0091  
[forest.eidbo@crystalmn.gov](mailto:forest.eidbo@crystalmn.gov)



**Therese Kiser (Ward 1)**  
763-458-0030  
[therese.kiser@crystalmn.gov](mailto:therese.kiser@crystalmn.gov)



**Traci Kamish (Ward 2)**  
763-330-0670  
[traci.kamish@crystalmn.gov](mailto:traci.kamish@crystalmn.gov)



**John Budziszewski (Ward 3)**  
612-207-3704  
[john.budziszewski@crystalmn.gov](mailto:john.budziszewski@crystalmn.gov)



**David Cummings (Ward 4)**  
952-479-0816  
[david.cummings@crystalmn.gov](mailto:david.cummings@crystalmn.gov)

## Council Meetings and Work Sessions

Council meetings are the first and third Tuesdays of the month at 7 p.m.  
Meetings are available virtually using the Zoom teleconferencing application.  
Visit [go.crystalmn.gov/citymeetings](http://go.crystalmn.gov/citymeetings) for meeting calendar updates and links.

Upcoming council meetings: Nov. 21 | Dec. 5 and 19 | Jan. 2 and 16 | Feb. 6

City council work sessions are usually the second Thursday of the month and  
before and/or after council meetings.

Work session audio recordings are at [go.crystalmn.gov/audio](http://go.crystalmn.gov/audio).

City meetings are live on Comcast Channel 16. Rebroadcast schedule:

- Sundays, Wednesdays, Fridays at 6:30 p.m.
- Mondays, Saturdays at 10:30 a.m.
- Tuesdays, Thursdays at 1 p.m.

Archived and live city council and EDA meeting webstreams are available at  
[go.crystalmn.gov/webstream](http://go.crystalmn.gov/webstream).



**Are You  
a New  
(or not so new)  
Resident?**

This QR code takes you to a  
webpage with the top ten useful  
links for new residents.





## City of Crystal Biennial Budget Process Council to host budget public hearing on Dec. 5

The city council will host its annual budget public hearing and consider the 2024 property tax levy at its regularly meeting on Tuesday, Dec. 5 at 7 p.m. Crystal residents are invited to attend the public input meeting to provide input on the budget and the proposed property tax levy. Final approval of the budget and levy is planned for Dec. 5.

The city council adopted a preliminary 2024 budget and property tax levy on Sept. 5 and took public input on Oct. 3. The overall levy can be lowered for final adoption, but it cannot be increased.

The city council reviews the demand for, and cost of, all its services and prioritizes them in a biennial (two-year) budget cycle. It is the city council's responsibility to balance the many competing interests across the community to provide the mix of services funded through the budget.

The total proposed levy increase for 2024 is \$1,515,022, which is a 10% levy increase. Hennepin County uses the proposed tax levy to prepare the Proposed Property Tax Notice sent to each property owner in mid-November.

The focus in 2024 is to continue two-year budget planning, maintain strong financial standing, meet the community's service demands by funding capital needs, including increased investment in streets and parks, and keep utility funds solvent through user fee increases, all while striving for minimal impact to taxpayers.

For more information about the city budget, visit [go.crystalmn.gov/budget](https://go.crystalmn.gov/budget). For budget-related questions, contact City Manager Adam R. Bell at [adam.bell@crystalmn.gov](mailto:adam.bell@crystalmn.gov), or 763-531-1140.

FRIENDS OF CRYSTAL PARKS PRESENTS...

### *Cheers to Crystal*



Join the Friends of Crystal Parks for a beer-tasting on Friday, March 15 from 6 – 9 p.m. at the Crystal Community Center.

Participants enjoy local brews, delicious food, non-alcoholic options and live music while contributing to the improvement of Crystal's parks.

Tickets before March 7 are \$25. Tickets also available at the door: \$30 (\$10 for designated drivers).

Register to attend at [go.crystalmn.gov/cheers](https://go.crystalmn.gov/cheers).

Learn more at [friendsofcrystalparks.org](https://friendsofcrystalparks.org).

## Nominate Your Great Neighbor for an Award



The eighth annual Neighbors Recognizing Neighbors Awards are designed to thank and honor great neighbors in Crystal.

If you have a kind and thoughtful neighbor who helps with the shoveling, watches your pets, loans their tools, helps in an emergency, volunteers in the community or does anything that makes them a great neighbor, nominate them for a City of Crystal Neighbors Recognizing Neighbors award.

Deserving neighbors will receive the award and be recognized by the city council and local media.

Nominations are accepted from Jan. 1 – Feb. 23, 2024. The nomination forms are available at city hall, at the community center or online at [crystalmn.gov](https://crystalmn.gov).

The award presentations take place during the city council meeting on Tuesday, April 16, as part of National Volunteer Week.

# Presidential Nomination Primary is March 5



The Presidential Nomination Primary (PNP) is Tuesday, March 5, 2024.

**Absentee Voting**

Absentee voting for the PNP begins Jan. 19.

Voters can fill out their ballot from home with an absentee ballot by mail.

For convenience, voters can also request an absentee ballot application online at [mnvotes.sos.mn.gov/abrequest/index](https://mnvotes.sos.mn.gov/abrequest/index). Applications are also available at city hall, by calling 763-531-1000 or visit [crystalmn.gov](https://crystalmn.gov).

Return completed applications by mail to Hennepin County Elections, Hennepin County Government Center, 300 South 6th St. MC 680, Minneapolis, MN 55487-0012. Applications can also be emailed to [hc.vote@hennepin.us](mailto:hc.vote@hennepin.us), or faxed to 612-348-2151.

Track the status of your absentee ballot, at [mnvotes.sos.mn.gov/abstatus/index](https://mnvotes.sos.mn.gov/abstatus/index).

**Register to Vote**

Registering to vote in Minnesota is easy. Check your voter registration status, register to vote and update your registration at [mnvotes.gov](https://mnvotes.gov).

If you have registered, you should confirm your registration is correct and up to date. Also, update your registration if you’ve moved or changed your name since the last time you’ve voted.

KEY PRESIDENTIAL NOMINATION PRIMARY DATES		
Date	Event	Days/Time
Jan. 19 – March 4	In-person absentee voting at city hall	Weekdays: 8 a.m. – 4:30 p.m. Saturday, March 2: 9 a.m. – 3 p.m. Monday, March 4: 8 a.m. – 5 p.m.
Feb. 13	Deadline for voters to pre-register for the Presidential Nomination Primary	By 5 p.m. in person or by mail. By 11:59 p.m. online through the Secretary of State website.
March 5	Presidential Nomination Primary	Polls are open 7 a.m. – 8 p.m.

VOTING LOCATIONS		
Ward, Precinct	Location	Address
W1, P1	Crystal City Hall	4141 Douglas Dr. N.
W2, P1 and W2, P2	FAIR School	3915 Adair Ave. N.
W3, P1	Crystal Community Center	4800 Douglas Dr. N.
W4, P1	Cornerstone Church	5000 West Broadway

Pre-registration deadline for the PNP is Feb. 13. If you plan to vote, but missed this deadline, register at your polling place on Election Day by showing proof of residence.

Find out what you will need to register on Election Day at [mnvotes.gov](https://mnvotes.gov). On Election Day, eligible voters may only vote in person at designated polling places.

Find your polling place in the Voting Locations Table (above), or visit [pollfinder.sos.state.mn.us/Street](https://pollfinder.sos.state.mn.us/Street), or call 763-531-1000.

**Election/Voter Website Resources**

- Secretary of State sites:*
- [sos.state.mn.us/elections-voting/other-ways-to-vote](https://sos.state.mn.us/elections-voting/other-ways-to-vote)
  - [sos.state.mn.us/elections-voting](https://sos.state.mn.us/elections-voting)
  - [sos.state.mn.us/elections-voting/how-elections-work/presidential-primary](https://sos.state.mn.us/elections-voting/how-elections-work/presidential-primary)
- Hennepin County sites:*
- [hennepin.us/residents/elections/voter-outreach-and-engagement](https://hennepin.us/residents/elections/voter-outreach-and-engagement)
  - [hennepin.us/residents/elections/prepare-vote](https://hennepin.us/residents/elections/prepare-vote)
- City of Crystal site:*
- [crystalmn.gov/resident/voting\\_and\\_elections](https://crystalmn.gov/resident/voting_and_elections)

## CRYSTAL SPARKLES

## Holiday Lighting Map

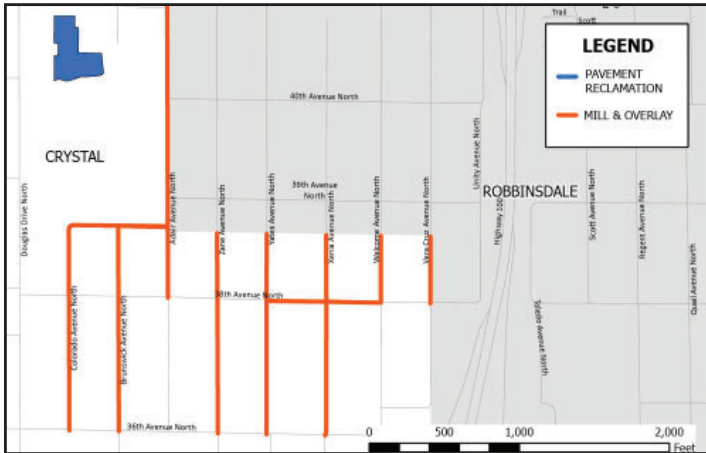
Whether decorating your house or yard, brighten spirits by showcasing your holiday lights as part of Crystal Sparkles. Maps of the displays are made available online, at city hall and at the community center.

Register your display location at [webtrac.crystalmn.gov](https://webtrac.crystalmn.gov) and enter activity the number W61017A1, or use the search term “Sparkles.”

Display locations must be entered by Sunday, Dec. 3.



# Public Works Projects Planned in 2024



## Street Maintenance

From May through September, Crystal will conduct mill and overlay street projects on the following streets. Learn more at [go.crystalmn.gov/pwprojects](https://go.crystalmn.gov/pwprojects).

- Colorado Ave. N. from 36th Ave. N. to 39th Ave. N.
- Brunswick Ave. N. from 36th Ave. N. to 39th Ave. N.
- Adair Ave. N. from 38th Ave. N. to 41st Ave. N.
- Zane Ave. N. from 36th Ave. N. to the Robbinsdale border south of 39th Ave. N.
- Yates Ave. N. from 36th Ave. N. to the Robbinsdale border south of 39th Ave. N.
- Xenia Ave. N. from 36th Ave. N. to the Robbinsdale border south of 39th Ave. N.
- Welcome Ave. N. from 36th Ave. N. to the Robbinsdale border south of 39th Ave. N.
- Vera Cruz Ave. N. from 38th Ave. N. to the Robbinsdale border south of 39th Ave. N.
- 38th Ave. N. from Yates Ave. N. and Welcome Ave. N.
- 39th Ave. N. from Colorado Ave. N. to Adair Ave. N.

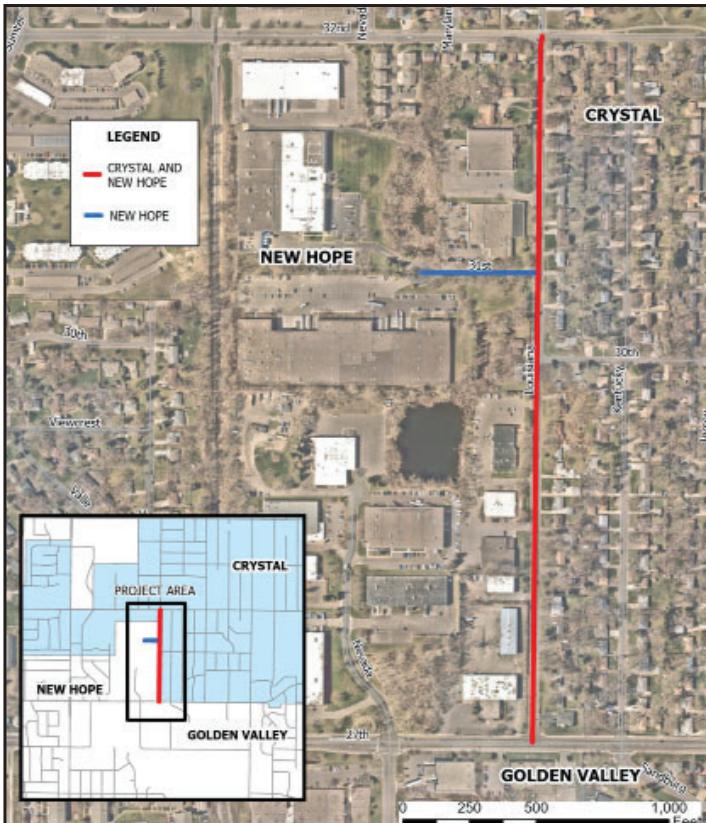
## Utility Reconstruction

The Utility Reconstruction Project is a joint effort with the City of New Hope and includes the replacement of sanitary sewer (including a portion of the connected services to the properties), water main (including the water services to the curb stops at each property), storm sewer as needed, and a new sidewalk along the east side of the roadway.

Once all utility work is complete, the curb and gutter will be replaced and the streets paved. Learn more at [go.crystalmn.gov/pwprojects](https://go.crystalmn.gov/pwprojects).

In all, the utility project includes the following streets:

- Louisiana Ave. N. from Medicine Lake Rd. to 32nd Ave. N.
- 31st Ave. N. from Louisiana Ave. N. to the cul-de-sac (City of New Hope).



## WINTER DRIVING KNOW BEFORE YOU GO

### Check road conditions.

Call 511 or visit your state's DOT webpage to check on road conditions. Choose a different route or adjust your travel plans if road conditions are poor.

### Pack an emergency supply kit.

Stock your vehicle with a mobile phone, charger, batteries, blankets, flashlight, first-aid kit, high-calorie, non-perishable food, candle to melt snow for drinking water, sack of sand or cat litter for traction, shovel, scraper, and battery booster cables.

### Get the weather forecast.

Change your travel plans if hazardous weather is expected.

### Ready your vehicle.

Check your battery, wipers, coolant, and other systems affected by cold temperature. Make sure your tires have good tread. Clear snow, ice or dirt from your windows, lights and camera.







## Chief's Corner



As the holiday season approaches and Thanksgiving celebrations are planned, I'd like to reflect on the past year and share a few of the many reasons I am thankful to serve as your police chief.

There are numerous opportunities to get involved with Crystal Police Department including the following two events that require the community's active participation to be successful.

### COMMUNITY POLICE ACADEMY

This fall, we continued our Community Police Academy partnership with the cities of New Hope and Robbinsdale. And the program again graduated a full class. The Community Police Academy is a great opportunity for participants to learn about the inner workings of their police department. Learn more at [go.crystalmn.gov/academy](http://go.crystalmn.gov/academy).

### COMMUNITY FORUM

On Oct. 11, the department conducted its fourth Tri-city Community Engagement Forum with New Hope and Robbinsdale at the Crystal Community Center.

The forum is an open and honest discussion on how to build on the positive relationships between the police department and our diverse communities. The event included discussions about police policies and procedures and information about youth programs. The forum has become an annual event, so watch for information for next year's forum.



### SHOP WITH A COP

Next month, the Crystal Police Department will continue its "Shop with a Cop" initiative in partnership with the local Crystal Target.

The program invites children to spend an evening with police officers to purchase gifts for members of their immediate

family with funds provided by the program. These children might not otherwise have the opportunity to shop for holiday gifts.

After shopping, the group enjoys a pizza party, wraps their gifts and get to know each other better, breaking down barriers while building a trusting relationship.

### CONCLUSION

I encourage you to find out more about the Crystal Police Department and its many programs and services at [police.crystalmn.gov](http://police.crystalmn.gov).

You can also connect on Facebook or Twitter – I bet you'll find something you didn't know about our police department. Links are available on the police website.

You can also listen to the Chiefs' Chat, a podcast featuring West Metro Fire-Rescue District Chief Sarah Larson and myself as we discuss public safety issues. Chiefs' Chat was recently named a top 30 public safety podcast. New episodes are released quarterly at [go.crystalmn.gov/chat](http://go.crystalmn.gov/chat).

In closing, if you have a question or need additional information from the police department, contact me at [stephanie.revering@crystalmn.gov](mailto:stephanie.revering@crystalmn.gov), 763-531-1010. You can also keep in touch via Facebook or Twitter.



## Free Program Teaches Young Women About Police Work

"Wonder Woman Defined" is a free program for young women ages 14 – 18 interested in becoming a police officer or learning more about this non-traditional field. The program is hosted by the Brooklyn Park Police Department in partnership with the Crystal Police Department and other local law enforcement agencies.



The two-day program is Friday, Dec. 1 from 8:30 a.m. – 5:30 p.m. and Saturday, Dec. 2 from 9 a.m. – 1 p.m. at the Brooklyn Park Police Department, 5400 85th Ave. N. Participants receive a t-shirt, collectible bag and lunch.

For program schedules and registration, use the QR Code above or visit [go.crystalmn.gov/3rClalHor](http://go.crystalmn.gov/3rClalHor).

For more information, contact Nicole Wicklund at 612-384-0771, [nicole.wicklund@brooklynpark.org](mailto:nicole.wicklund@brooklynpark.org). Para asistencia, llame al 612-384-0771 y solicite un intérprete.

## How to Assist Snow Operations

One of Crystal Public Works' core functions is snow removal. The city clears 90 miles of streets that are divided into six routes. During an average snowfall, it takes about eight hours to plow each route.

- Do not park on the street. Weather can be unpredictable. Parked vehicles diminish safety and maintenance efficiency.
- Place trash and recycling carts off the street, back from the edge at least two to three feet.
- Move basketball hoops or other movable items away from the street. In general, 15 feet from the edge of the street.
- Do not shovel or blow snow on or across streets or sidewalks. This creates hazards for users and is against the law.
- Be patient.
- Yield to snowplows.
- Don't pass a snowplow on the right.
- Give snowplows plenty of room.
- Be observant. Snowplows may need to reverse or reposition themselves.
- Do not cut the snowplow off. Snowplows weigh 17 times more than a car, and their stopping distance is a lot longer.
- Turn your headlights on for better visibility.

## Lithium Battery Safety

The West Metro Fire-Rescue District has responded to several battery fires and reminds residents that lithium batteries can catch on fire or explode when not used correctly, or damaged.

Lithium-ion batteries power many devices including phones, laptops, e-bikes, e-cigarettes, smoke alarms, toys and even cars. According to the National Fire Protection Assoc., you should only use batteries and devices listed by a qualified testing laboratory. Follow instructions, only use a battery that is designed for a device and only the correct charging cord. Do not charge a device under your pillow, on your bed or on a couch. Also, do not keep charging a device or battery after fully charged. Keep batteries at room temperature when possible.

Stop using the battery if you notice the following problems: odor, change in color, too much heat, change in shape, leaking or odd noises. If it is safe to do so, move the device away from anything that can catch fire.

Do not dispose of lithium-ion batteries in the trash or leave in a pile. Package the batteries in the original container to dispose of them. Tape off each end of the battery. Recycling is always the best option.



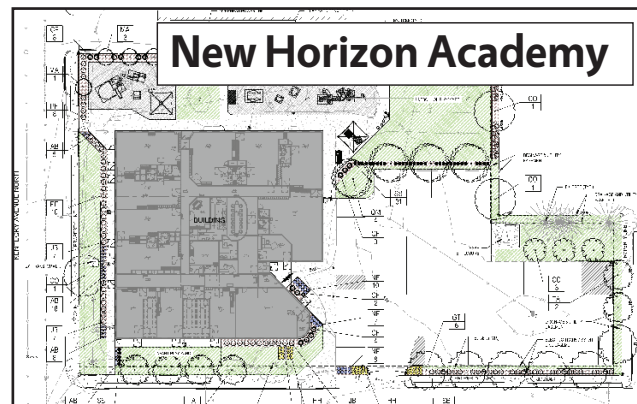


# Business and Development Update

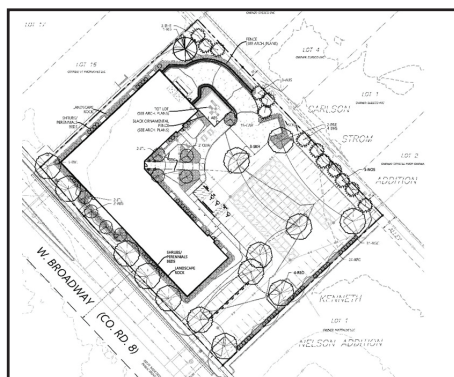
## Ribbon Cutting



Crystal Mayor Jim Adams and EDA President Therese Kiser helped celebrate the opening of Herself Health at 5200 Douglas Dr. N.



New Horizon will convert the office building at 7000 57th Ave. N. into a child day care center. Opening is anticipated in 2024.



Sand Companies is constructing a four-story 58-unit apartment building at 5240 West Broadway (next to Big Louie's). The units will range from 1BR-1BA to 4BR-2BA and will be affordable to households at or below 60% of metro area median income. Completion is anticipated in summer 2024. Sign up for future notifications from the developer at [5240apts.com](https://5240apts.com).

## Have You Seen It?



B&R Auto Repair at 6304 42nd Ave. N. renovated its building with assistance from the joint city-county façade improvement program.



SENIOR  
COMMUNITY  
SERVICES

Are you age 60 years or older and having difficulty maintaining your property?

The city is partnering with Senior Community Services to help with indoor and outdoor chores such as lawn care, snow removal, housekeeping, minor repairs and painting. Fees are on a sliding scale based on income.

For more information, call 952-746-4046 or visit [bit.ly/44yELKO](https://bit.ly/44yELKO).



# Blue Line Extension Update



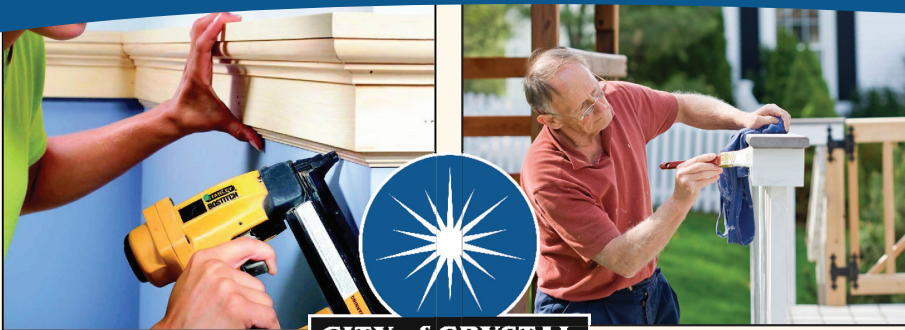
The Metropolitan Council and Hennepin County are planning the Blue Line light rail extension project from Minneapolis to Brooklyn Park.

In Crystal, the line would run in the median of Bottineau Blvd., with a station at Bass Lake Road (see proposed route below). The environmental review is underway. The city council will vote on municipal consent in the summer of 2024. Construction is anticipated in 2027-30.

For more information, visit [go.crystalmn.gov/blueline](http://go.crystalmn.gov/blueline).



# Home Improvement Assistance



CITY of CRYSTAL

## Home Improvement Grants

Home improvement Grants are funded by the Crystal Economic Development Authority and administered by the Center for Energy and Environment.

- The property must be **owner occupied**.
- Maximum household income:

Number of People in the Household	Maximum Household Income
1	\$78,300
2	\$99,400
3	\$111,800
4	\$124,200
5	\$134,200
6	\$144,100
7	\$154,100
8	\$164,000

- The eligible costs must total at least **\$4,000**.
- The grant is **20%\*** of eligible costs. *\*40% for some sewer projects.*
- A property may not receive grants totaling more than **\$8,000** per year.
- The application must be submitted and approved **before** starting your project.
- The grant will be paid **after** the project is completed.

For more information, contact the Center for Energy and Environment at 612-335-5884 [www.mncee.org/Crystal](http://www.mncee.org/Crystal).

## Deferred Loans

Deferred loans use federal funds and are administered by Hennepin County.

Deferred, no-interest home rehab loans to homeowners up to 80% of metro area median income:

Number of People in the Household	Maximum Household Income
1	\$66,300
2	\$75,750
3	\$85,200
4	\$94,650
5	\$102,250
6	\$109,800
7	\$117,400
8	\$124,950

- The loan term is 15 years and repayment is deferred while the recipient continues to own and occupy the property.
- If the recipient ceases to own and occupy the property at any time during the 15-year term, then the loan must be repaid in full.

For more information, contact Hennepin County housing rehabilitation at 612-543-4182 or [rehab@hennepin.us](mailto:rehab@hennepin.us).

## Focus on Enforcement



### Snow Removal

Be respectful of neighbors and property when shoveling, plowing or blowing snow. It is a city code violation to plow, blow, shovel or push snow from a property onto any street, sidewalk or other public property.

After a snowfall of 1.5 inches or more, on-street parking is prohibited until the street is plowed from curb to curb. This helps plow drivers do the best job possible. On-street parking is prohibited year-round between 2 a.m. – 5 a.m. Parking violations should be reported to the Crystal Police by calling 911. Questions about snow removal on city streets should be directed to the street maintenance division at 763-531-1164.

### Garbage/Recycling Container Placement

Containers may never be placed on public streets or interfere with removal of snow from the roadways. Please be sure your containers are placed behind the curb or at the end of your driveway and will not pose a hazard to passing motorists or snowplows.

Containers may be placed out at their collection location the night before collection and shall be removed from that location no later than 12:00 p.m. the day following scheduled collection.

The preferred location for storage of containers is inside. However, if stored outside, they must be placed and kept in a neat and orderly manner and not cause a nuisance to an adjoining property.

### Plan Your Property Improvement Project

Planning to finish your basement? Replace your roof? Build a storage shed? Install a new driveway? A permit may be required for your planned property improvements. Contact city hall at 763-531-1000 before you begin. Permits must be issued by the city before you begin work.

Permit applications and handouts are available at city hall or visit the city website at [go.crystalmn.gov/3EQIidv](http://go.crystalmn.gov/3EQIidv).

Code enforcement-related questions or complaints can be directed to the code enforcement inspector at 763-531-1144 or email [efrayn.franquiz@crystalmn.gov](mailto:efrayn.franquiz@crystalmn.gov).

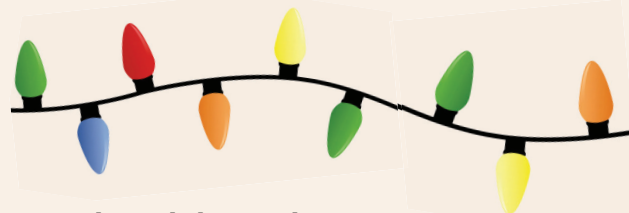
## Last Call For Yard Waste

Crystal residents may drop off grass, brush, leaves, garden waste and other yard waste for no charge at the Maple Grove Yardwaste Site, 10300 Maple Grove Pkwy. N., in Maple Grove.

The site is open Monday – Saturday, 8 a.m. – 7 p.m., and Sunday, noon – 7 p.m. The site closes for the season on Tuesday, Nov. 30 and will not reopen until April 1, 2024.

By state law, leaves and other yard waste cannot go into your trash or recycling cart. More information at [mgyardwaste.com](http://mgyardwaste.com) or call 763-420-4886.

Contact your garbage hauler to ask about special collection services and fees for yard waste.



### Recycle Holiday Lights

Bring used lights to the Hennepin County Drop-Off Facility, 8100 Jefferson Highway, Brooklyn Park and recycle them for free.

Don't put lights in the curbside recycling cart. Strings, chains, plastic bags, hoses and clothes get wrapped around the sorting machinery and workers have to cut them off by hand and throw them in the trash.

### Loose in Your Cart

Place your recyclables in your cart loose; do not put them in bags. Plastic bags get tangled in the recycling sorting machinery and end up in the trash, as does the material inside them. Bottles and cans get nested inside paper bags and can't be separated.

To recycle correctly, empty your bags of recyclables into your cart, reuse paper bags or put them on top of the other recycling, and take plastic bags back to the store for recycling.



More events at [go.crystalmn.gov/cityevents](http://go.crystalmn.gov/cityevents)

## NOV. 30

### Maple Grove Yard Waste Site Closes for Season

8 a.m. – 7 p.m.  
10300 Maple Grove Pkwy. N



## DEC. 2

### Winterfest

10 a.m. – noon  
Crystal Community Center



## DEC. 3

### Crystal Sparkles Lighting Contest Deadline

Entry Forms available at [crystalmn.gov](http://crystalmn.gov).



## DEC. 5

### City Budget Public Hearing

7 p.m.  
Crystal City Hall



## DEC. 9

### Tri-city Santa Parade

Through Robbinsdale, Crystal and New Hope. Maps and Information at [crystalmn.gov](http://crystalmn.gov).



## DEC. 9

### West Metro Auxiliary Craft & Vendor Show

9 a.m. – 3 p.m. Fire Station No. 3  
4251 Xylon Ave. N., New Hope



## FEB. 3

### Winterlude

11 a.m. – 1 p.m.  
Valley Place Park



## FEB. 23

### Neighbors Recognizing Neighbors Award Deadline

See page 3.



## MARCH 15

### Cheers to Crystal

6 – 9 p.m.  
Crystal Community Center

