



4141 Douglas Drive North • Crystal, Minnesota 55422-1696

Tel: (763) 531-1000 • Fax: (763) 531-1188 • [www.crystalmn.gov](http://www.crystalmn.gov)

**To:** Resident or Business near the Canadian Pacific Railroad crossings

**From:** John Sutter, Community Development Director

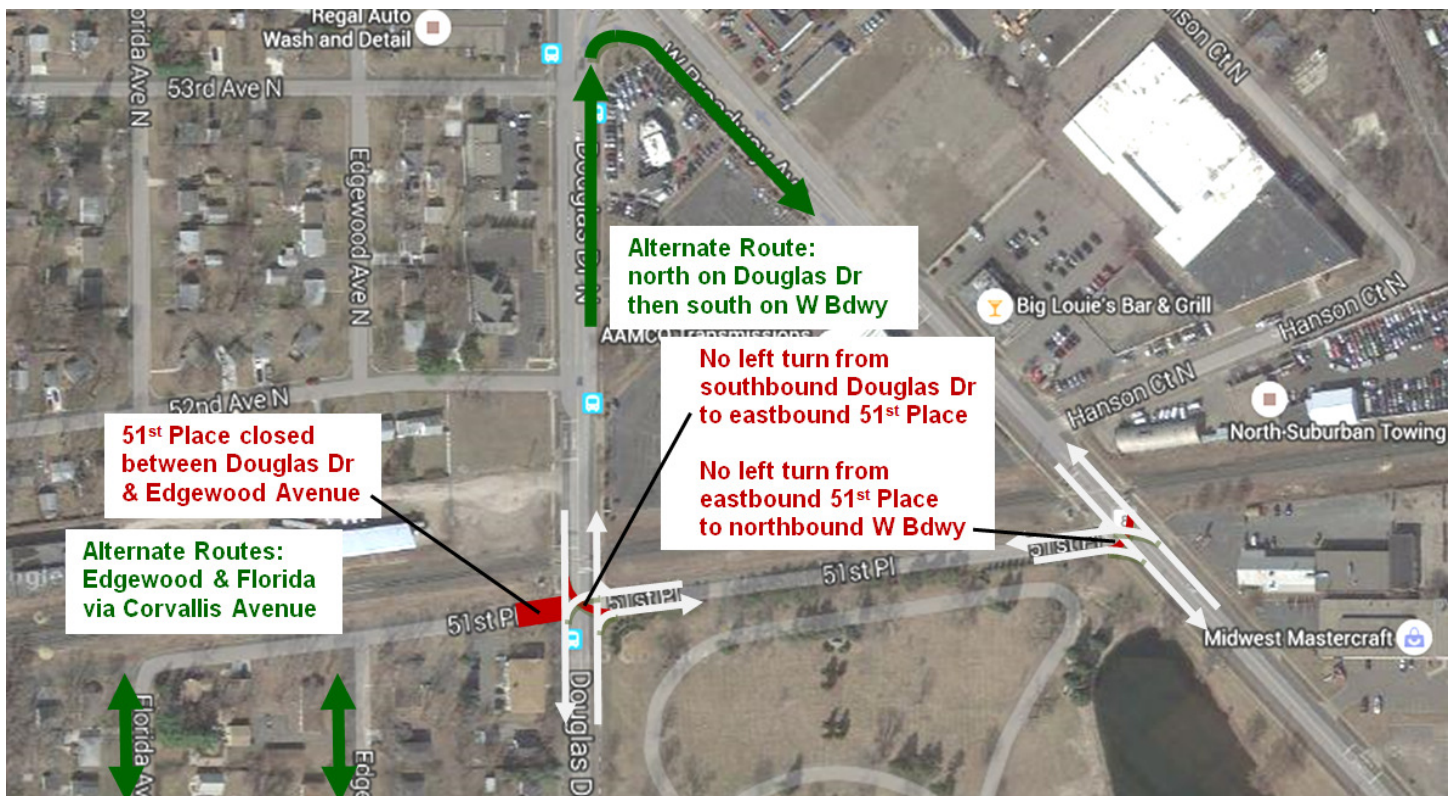
**Date:** January 23, 2017

**Subject:** Train Horn Quiet Zone Update

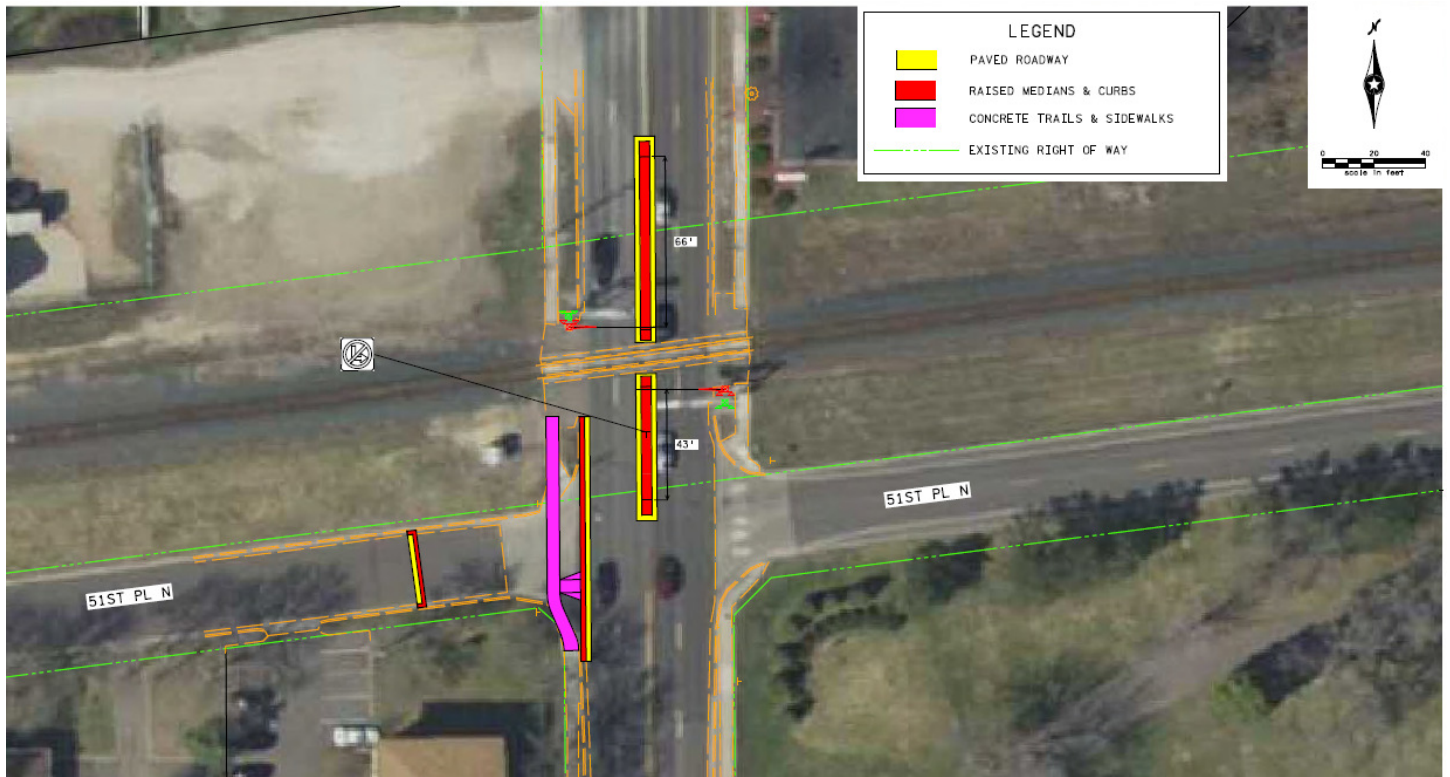
You may recall previous letters in spring and summer 2016 about the city's plans for a train horn quiet zone where Douglas Drive and West Broadway cross the Canadian Pacific. Since then, the city has further refined the design, received approval from other local and state agencies, and submitted a Quiet Zone Application to the Federal Railroad Administration. Construction is anticipated in the third quarter of 2017.

Once the quiet zone improvements are constructed, some traffic movements will no longer be possible. Please see the map below and the updated layouts on the other side of this sheet. If you would like more information, please see "Potential Railroad Quiet Zone" under "What's Happening" at [www.crystalmn.gov](http://www.crystalmn.gov). If you have questions please feel free to contact me at (763) 531-1130 or [john.sutter@crystalmn.gov](mailto:john.sutter@crystalmn.gov). The city will send another update before construction begins later this year.

**TRAFFIC MOVEMENT CHANGES REQUIRED FOR THE QUIET ZONE:**



### UPDATED LAYOUT FOR QUIET ZONE IMPROVEMENTS AT DOUGLAS DRIVE:



### UPDATED LAYOUT FOR QUIET ZONE IMPROVEMENTS AT WEST BROADWAY:

